



**Monitoring, Learning and Managing  
Smart Irrigation Technology**



# End-to-End Solution

esular, by digitalizing the agriculture and water management sectors, data-based to use water and fertilizer resources more efficiently with decisions and it is an artificial intelligence supported water and energy management platform that aims to pioneer sustainable agriculture.

Our products are integrated with cloud-based, artificial intelligence-supported software it consists of hardware and software solutions that have been developed. We offer technological solutions that monitor, learn and manage at the point of sustainable agriculture, water and fertilizer management.

● Central Communication Station	5	● Pool Level Sensor with Wireless Battery	21
● Valve Control Station	10	● pH-EC with Wireless Battery Temperature Sensor-Smart Series	25
● Valve Control Unit with Wireless Battery	14	● Smart Irrigation Management Software	26
● Soil Moisture Sensor with Wireless Battery	15	● Pump Control Station	28
● Humidity Temperature Sensor with Wireless Battery	17	● Float Status Sensor	29
● Carbon Dioxide Sensor with Wireless Battery	18	● Lora/LoRaWAN Translator	30
● Meter Flow And Consumption Sensor With Wireless Battery	19	● Hydraulic High Pressure Irrigation Valve	32
● Pressure Sensor with Wireless Battery	20	● Solenoid Valves	33

# Advantages of Doing Smart Irrigation with Esular

---

## 24/7 Internet Tracking

Esular's user-friendly web and mobile application, water and irrigation the most modern and easy to take control of your systems he offers his way. By providing 24/7 tracking over the Internet it gives users the freedom to manage their business from anywhere.



## Remote, Wireless Water Management And Control

With Esular wireless water management and control solutions, water beyond managing your resources remotely and wirelessly, it offers the latest technology in the industry. Thanks to its wireless structure its installation and use are quite simple. Hem irrigation it can easily monitor your systems, as well as quickly and effectively you can control it.



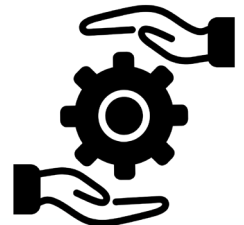
## Watering the Right Amount at the Right Time

Esular not only digitizes the land thanks to its digital infrastructure at the same time, the data collected from the digital infrastructure with artificial intelligence by making sense, the plant determines the need for water. In this way, your plant it allows it to be watered in the right amount at the right time.



## Plug & Play Practical Installation

Thanks to Esular's plug-and-play practicality, installation and use has never been so easy. Wireless construction so we can quickly set up our system and start using it immediately. you can start. Practicality and efficiency for its users Esular makes the water management experience even easier.



## Long Battery Life

Continuous and uninterrupted water management with a long battery life of more than 5 years we stand out with the commitment to make. Our smart technology and low energy by providing long battery life with our consumption, our users are reliable and we offer a sustainable water management experience.



## Smart Management

Systems automatically in case of malfunction, loss, leakage by stopping, we prevent possible damages. Smart sensors and automatic thanks to our detection technology, any abnormal in the system we can quickly detect the situation. In this way, immediate intervention by protecting water resources and possible problems in the system we are ensuring that it is minimized.

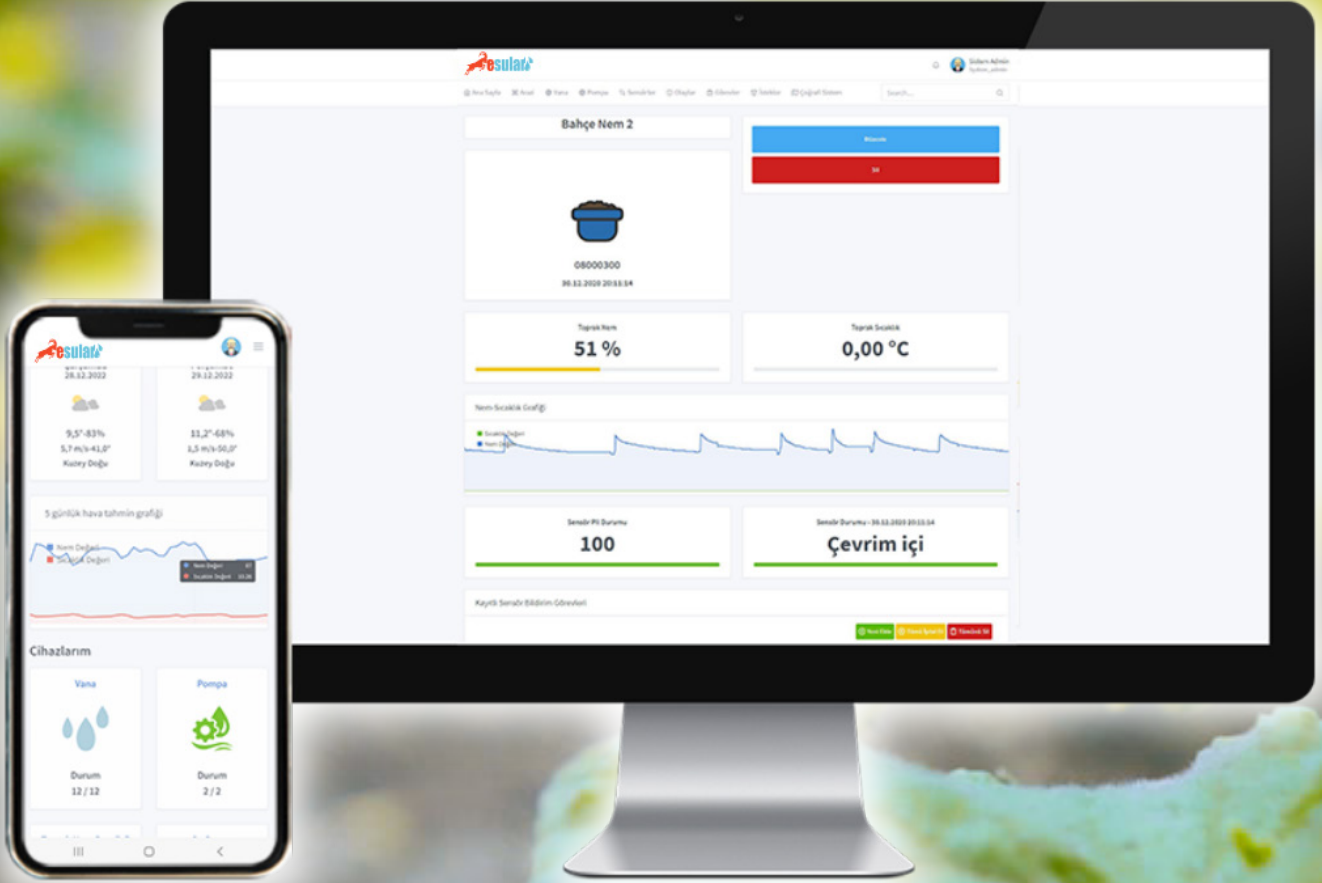


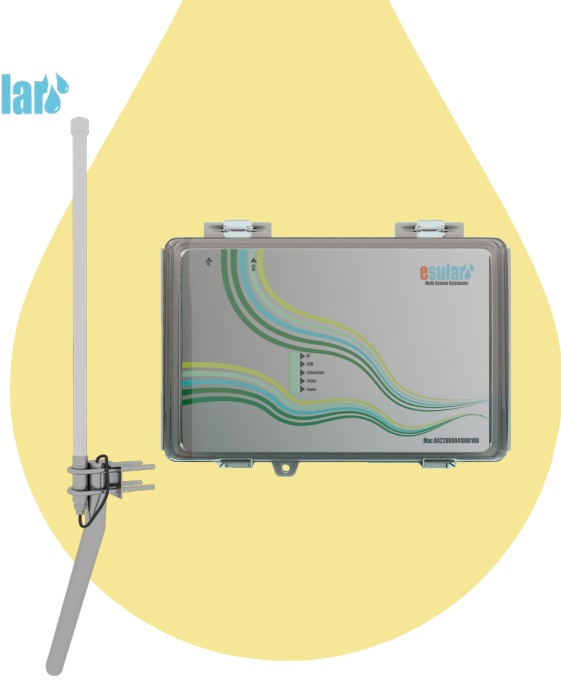


## **Smart Irrigation Technology that Monitors, Learns and Manages** **Produce More with Less**

Esular's smart irrigation solutions with its user-friendly web and mobile application by providing 24/7 internet tracking, water and irrigation systems can be easily it provides the freedom to manage. Wireless water management and control, with its simple installation the possibility of remote monitoring and effective control of systems by combining he knows. In addition, with the use of digital infrastructure and artificial intelligence, the plant correctly meets the need for water it helps to meet it on time and in the right quantities. Esular's plug and play practical installation, long battery life and automatic system stop in case of malfunction water management with its characteristics it makes it reliable and sustainable.







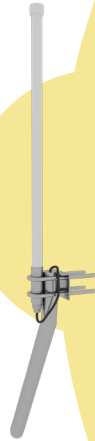
## Remote Controlled Wireless Smart Irrigation Central Station - E Series Long

- External power supply - Internal battery
- Hydraulic valve and pump control
- Soil moisture sensor input
- Water meter input
- Operating temperature range is -40°C~+85°C.
- IP65 waterproof.
- Remote control via GSM.
- Wireless valve and sensor support.
- Ability to collect wireless data from up to 256 devices.



### General Specifications

- There is an external power supply input of 2V-24V 2A.
- It has a built-in battery up to 5000 mAh, which allows it to continue functioning during power outages.
- There is 1 RS-485 communication port for local data transfer.
- There are 4 dry contact relay outputs.
- It can be managed remotely through connection settings and operation settings.
- There is internal memory to prevent data loss during power outages.
- It can automatically send location information.
- The device has a GSM communication unit, a SIM card slot, and an external antenna output.
- It can operate as Ethernet, GSM, or local.
- External high-gain GSM and RF antennas can be attached.
- RF frequency is 868MHz EU and there are 8 channels.
- It allows wireless data transfer up to 5 Km. It has a coverage area of 10 Km.
- It supports Lora modulation and LoraWAN protocols.
- It can communicate on 8 channels simultaneously and collect data from up to 10,000 nodes. It also supports Lora modulation and LoraWAN protocols.
- It has 2Mb internal memory.
- Operating temperature range is -40°C~+85°C.

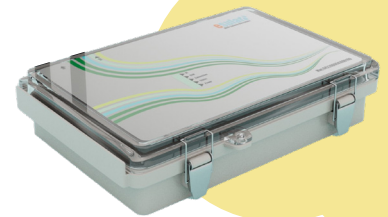


### Application Areas

- Collecting Sensor Data with Lora/LoraWAN
- Smart City Applications
- Smart Agriculture Applications
- Smart Greenhouse Applications
- Smart Meter Reading (Electricity, Gas, Water)
- Irrigation Systems
- Internet of Things (IoT)
- Sensor Data Collection
- Wireless Sensor Data Collection

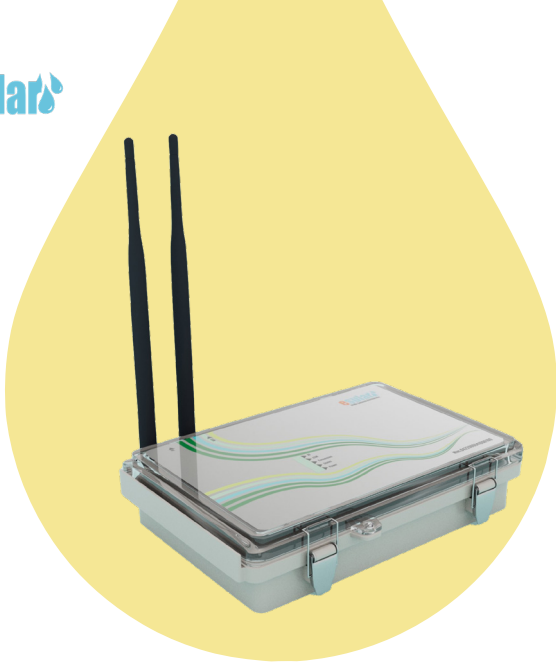
### Models and Details

249×112 mm



Model Adı	Giriş Güç Değerleri	GSM	Wifi	Ethernet	RS485	Şarjlı Pil	Kablosuz Kontrol	Mesafe	Harici Sensör S.	Harici Vana S.	Dahili Pompa S.	Dahili Basınç S.	Dahili Sayaç S.	İç Görevler	Harici Anten
EMax-Long	12V-24V / 2A	Var	Var	Op	Var	Var	Var	5Km	128	128	4	2	2	256	GSM,RF
EMin-Long	12V-24V / 2A	Var	Var	Op	Var	Var	Var	5Km	64	64	2	1	1	128	GSM,RF





## Wireless Smart Irrigation Center Station - E Series Short

- External power supply - Internal battery
- Hydraulic valve and pump control
- Soil moisture sensor input
- Water meter input
- Operating temperature range is -40°C~+85°C.
- IP65 waterproof.
- Remote control via GSM.
- Wireless valve and sensor support.
- It is capable of wirelessly collecting data from up to 64 devices.

LoRa LoRaWAN

GSM

WiFi

## General Specifications

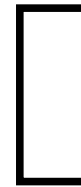
- It has an external power input of 12V-24V 2A.
- Uninterrupted irrigation with a built-in rechargeable 3800mAh battery.
- It provides control of hydraulic type valves or solenoid valves.
- It has dry contact relay outputs.
- It can be managed with remote connection settings and working settings.
- It has internal memory and battery to prevent data loss during power outages.
- It can automatically send location information.
- It has a GSM communication unit, a SIM card slot, and an external antenna output.
- It can work both with GSM and locally.
- It is possible to connect external high-gain GSM and RF antennas.
- RF frequency is EU 868MHz and it has 1 channel.
- It allows wireless data transfer up to 1 km. it has a coverage area of 2 km.
- It supports Lora modulation and LoraWAN protocols.
- It can communicate on 1 channel at the same time and collect data from up to 64 nodes.
- It has 2Mb internal memory.
- Operating temperature range is -40°C~+85°C.



## Application Areas

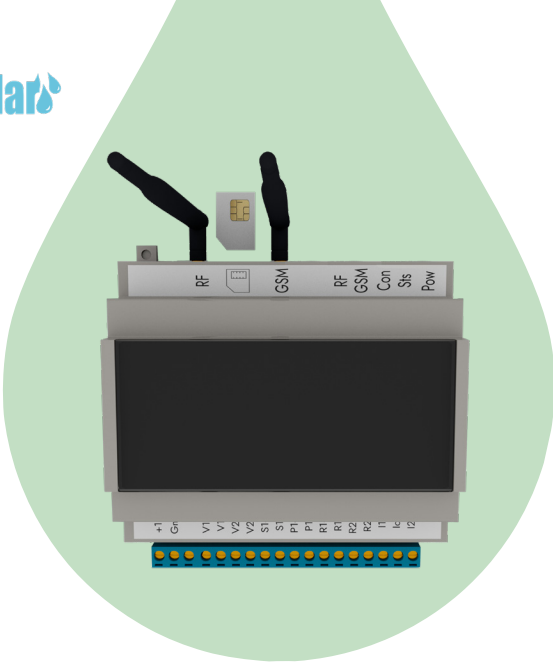
- Smart Irrigation Solutions
- Remote Irrigation for Parks and Gardens
- Smart Agriculture Applications
- Smart Greenhouse Applications
- Vertical Garden Irrigation Solutions
- Irrigation Systems
- Internet of Things (IoT)
- Wireless Sensor Data Collection

249×112 mm



## Models and Details

Model Adı	Giriş Güç Değerleri	GSM	Wifi	Ethernet	RS485	Şarjlı Pili	Kablosuz Kontrol	Mesafe	Harici Sensör Sayısı	Harici Vana Sayısı	Dahili Pompa Sayısı	Dahili Basınç Sayısı	Dahili Saygı Sayısı	İç Görev Sayısı	Harici Anten
EMax-Short	12V-24V / 2A	Var	Var	Op	Var	Var	Var	1Km	32	32	4	2	2	64	GSM,RF
EMin-Short	12V-24V / 2A	Var	Var	Op	Var	Var	Var	1Km	16	16	2	1	1	32	GSM,RF
E-ex-Max	12V-24V / 2A	Yok	Var	Op	Var	Var	Var	1Km	32	32	4	2	2	64	RF
E-ex-Min	12V-24V / 2A	Yok	Var	Op	Var	Var	Var	1Km	16	16	2	1	1	32	RF



## Wireless Smart Irrigation With GSM Central Station F Series

- External supply
- Pump valve control
- Pressure sensor input
- Water meter input
- Operating temperature range is  $-40^{\circ}\text{C} \sim +85^{\circ}\text{C}$ .
- Internet control with GSM
- Wireless valve and sensor support
- Wirelessly collect data up to 32 devices



### General Specifications

- There are external power inputs of 5V-12V-24V and 2A.
- Provides control for hydraulic type valves or solenoid valves.
- There is a dry contact output for relay of the pump.
- It has a 9V hydraulic valve control output.
- There is an internal memory to prevent data loss during power outages.
- It can automatically send location information.
- It has a GSM communication unit, SIM card slot, and external antenna output.
- It can operate with GSM or locally.
- External gainful GSM and RF antennas can be attached.
- RF frequency is EU 868MHz and it has 1 channel.
- It allows data transfer up to 1 km. it has a coverage area of 2 km.
- It supports LoRa modulation and LoRaWAN protocols.
- It can communicate through 1 channel simultaneously and collect data from 32 points.
- Operating temperature range is  $-40^{\circ}\text{C} \sim +85^{\circ}\text{C}$ .

### Application Areas

- Smart Irrigation Solutions
- Remote Irrigation for Parks and Gardens
- Smart Farming Applications
- Smart Greenhouse Applications
- Vertical Garden Irrigation Solutions
- Irrigation Systems
- Internet of Things (IoT)
- Wireless Sensor Data Collection

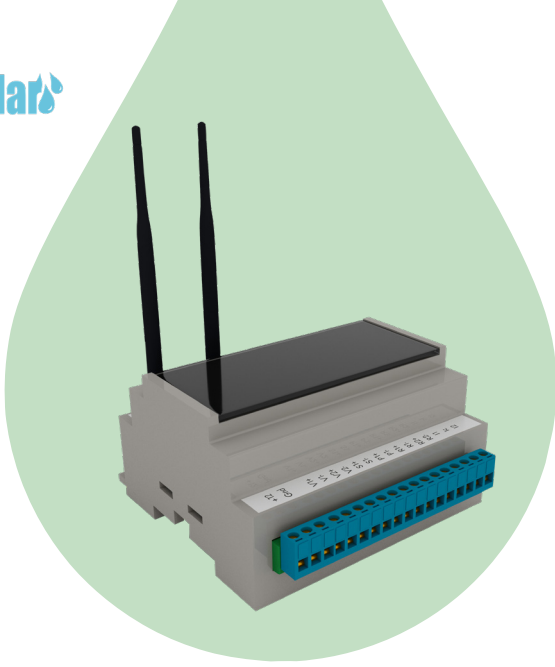
### Models and Details

Model Adı	Giriş Güç Değeri	GSM	Wifi	Ethernet	RS485	Pil	Kablosuz Kontrol	Mesafe	Harici Sensör S.	Harici Vana S.	Dahili Pompa S.	Dahili Basınç S.	Dahili Sayaç S.	İç Görevler	Harici Anten
FMax-Short	12V-24V / 2A	Var	Op	Yok	Var	Yok	Var	1KM	16	16	2	1	1	32	GSM,RF
FMin	12V-24V / 2A	Var	Op	Yok	Var	Yok	Yok	Yok	Yok	Yok	1	1	1	16	GSM



105x91 mm





# Wireless Smart Irrigation Station- F Series

- External Supply
- Long-range wireless communication.
- Pump and valve control output
- Water meter pressure input
- Operating temperature range is  $-40^{\circ}\text{C} \sim +85^{\circ}\text{C}$ .
- Wireless remote control
- Wireless valve and sensor support.



## General Specifications

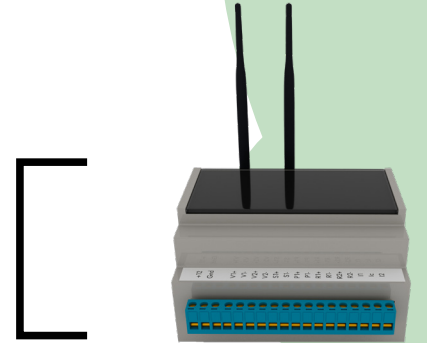
- There is a 12V-24V 2A External supply input.
- It provides control of hydraulic type valves or solenoid valves.
- There is a dry contact relay output for the pump.
- It can be managed with remote connection settings and working settings.
- The device has internal memory to prevent data loss in case of power outages.
- It can automatically send location information.
- It has a GSM communication unit, a SIM card slot, and an external antenna output.
- It can work both with GSM and locally.
- External gain GSM and RF Antenna can be installed.
- RF frequency is EU 868MHz and it has 1 channel.
- It allows data transfer up to 1km.
- It supports Lora modulation and LoraWAN protocols.
- It has 2Mb internal memory.
- Operating temperature range is  $-40^{\circ}\text{C} \sim +85^{\circ}\text{C}$ .

## Application Areas

- Smart Irrigation Solutions
- Remote Irrigation for Parks and Gardens
- Smart Farming Applications
- Smart Greenhouse Applications
- Vertical Garden Irrigation Solutions
- Irrigation Systems
- Internet of Things (IoT)
- Wireless Sensor Data Collection
- Remote Pump Control



105x91 mm

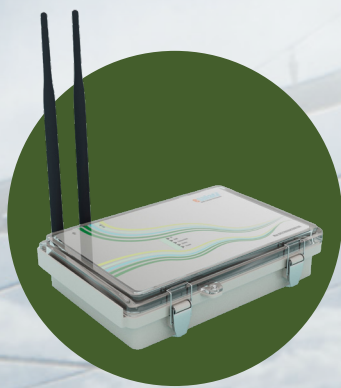


## Models and Details

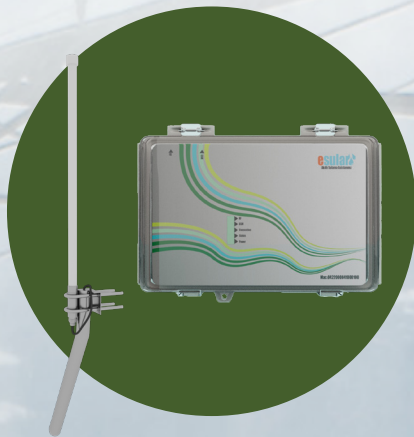
Model Adı	Giriş Güç Değeri	GSM	Wifi	Ethernet	RS485	Pil	Kablosuz Kontrol	Mesafe	Harici Sensör S.	Harici Vana S.	Dahili Pompa S.	Dahili Basınç S.	Dahili Sayaç S.	İç Görevler	Harici Anten
FEx	12V-24V / 2A	Yok	Yok	Yok	Var	Yok	Var	1KM/5KM	Yok	Yok	1	1	1	8	RF

# Wireless Pivot Irrigation Control Systems

Remote Pivot Irrigation Control with GSM



**E-ex-Min**

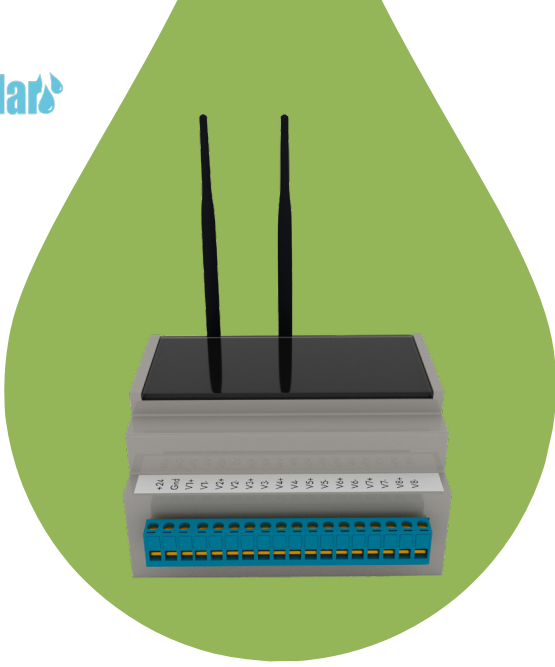


**E-Max-Long**



**E-ex-Min**





# Wifi 24V with Solenoid Valve Control Station

- External supply
- Controlling 24V solenoids.
- Hydraulic valve control.
- Up to 8 valve outputs.
- Control via the internet using Wi-Fi.
- Operating temperature range is -40°C~+85°C

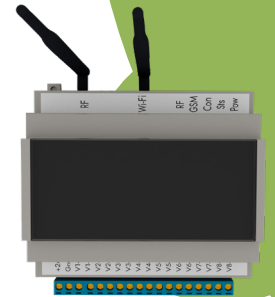


## General Specifications

- There is an external supply input of 24V 2A.
- It has up to 8 24V valve control outputs.
- It can be managed with remote connection settings and working settings.
- The device has internal memory to prevent data loss in case of power outages.
- It can automatically send location information.
- It can be remotely controlled via Wi-Fi over the internet.
- An external gain Wifi antenna can be installed.
- It allows WiFi data transfer up to 150 meters.
- It has 2MB of internal memory.
- An external gain Wi-Fi Antenna can be installed.
- Operating temperature range is -40°C~+85°C.

## Application Areas

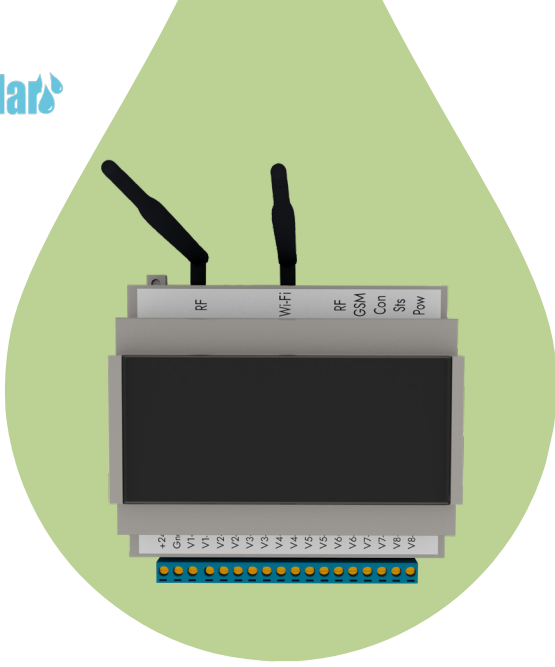
- Smart City Applications
- Smart Farming Applications
- Smart Greenhouse Applications
- Irrigation Systems
- Remote Control
- Internet of Things (IoT)
- Smart Lighting Solutions
- Vertical Farming Applications
- Hydroponic Agricultural Practices



105x91 mm

## Models and Details

Model Adı	Giriş Güç Değeri	GSM	Wifi	Pil	Kablosuz Kontrol	Vana Sayısı	İç Görevler	Harici Anten
Smart-Wifi-Valve-2-24AC	24V / 2A	Yok	Var	Yok	Yok	2	4	Op
Smart-Wifi-Valve-8-24AC	24V / 4A	Yok	Var	Yok	Yok	8	16	Op
Smart-Wifi-Valve-12-24AC	24V / 4A	Yok	Var	Yok	Yok	12	24	Op



## GSM 24V with Solenoid Valve Control Station

- External supply
- Controlling 24V solenoids.
- Hydraulic valve control.
- Up to 8 valve outputs.
- Control via the internet using Wi-Fi.
- Operating temperature range is -40°C~+85°C



### General Specifications

- There is an external supply input of 24V 2A.
- It has up to 8 24V valve control outputs.
- It can be managed with remote connection settings and working settings.
- The device has internal memory to prevent data loss in case of power outages.
- It can automatically send location information.
- It can be remotely controlled via Wi-Fi over the internet.
- An external gain GSM antenna can be installed.
- Control over the Internet allows data transfer.
- It has 2MB of internal memory.
- Operating temperature range is -40°C~+85°C.

### Application Areas

- Smart City Applications
- Smart Farming Applications
- Smart Greenhouse Applications
- Irrigation Systems
- Remote Control
- Internet of Things (IoT)
- Smart Lighting Solutions
- Vertical Farming Applications
- Hydroponic Agricultural Practices

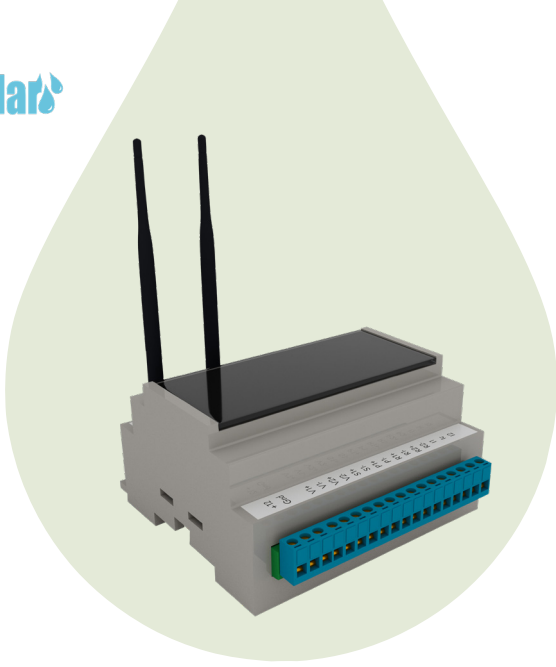


105x91 mm

### Models and Details

Model Adı	Giriş Güç Değeri	GSM	Wifi	Pil	Kablosuz Kontrol	Vana Sayısı	İç Görevler	Harici Anten
Smart-GSM-Valve-2-24AC	24V / 2A	Var	Yok	Yok	Yok	2	4	Op
Smart-GSM-Valve-8-24AC	24V / 4A	Var	Yok	Yok	Yok	8	16	Op
Smart-GSM-Valve-12-24AC	24V / 4A	Var	Yok	Yok	Yok	12	24	Op





# Wireless 24V with Solenoid Valve Control Station

- External supply
- Controlling 24V solenoids.
- Hydraulic valve control.
- Up to 8 valve outputs.
- Control via internet with the central station.
- Operating temperature range is -40°C~+85°C

LoRa LoRaWAN

## General Specifications

- There is an external supply input of 24V 2A.
- It has up to 8 24V valve control outputs.
- It can be managed with remote connection settings and working settings.
- The device has internal memory to prevent data loss in case of power outages.
- It can automatically send location information.
- It can work remotely by connecting to the Internet via the central station.
- An external gain RF antenna can be installed.
- Control over the Internet allows data transfer.
- It has 2MB of internal memory.
- Operating temperature range is -40°C~+85°C.

## Application Areas

- Smart City Applications
- Smart Farming Applications
- Smart Greenhouse Applications
- Irrigation Systems
- Remote Control
- Internet of Things (IoT)
- Smart Lighting Solutions
- Vertical Farming Applications
- Hydroponic Agricultural Practices



105x91 mm

## Models and Details

Model Adı	Giriş Güç Değeri	GSM	Wifi	Pil	Kablosuz Kontrol	Vana Sayısı	Harici Anten
Smart-Lora-Valve-2-24AC	24V / 2A	Yok	Yok	Yok	Var	2	RF
Smart-Lora-Valve-8-24AC	24V / 4A	Yok	Yok	Yok	Var	8	RF
Smart-Lora-Valve-12-24AC	24V / 4A	Yok	Yok	Yok	Var	12	RF



**Solenoid Valves Of All Diameters And  
Models The Digital Way to Manage Remotely!**







## Hydraulic with Wireless Battery Valve Control Unit

- Wireless Communication
- 9V Latch Hydraulic valve control
- EU 868 MHZ
- Communication up to 5 Km
- Operating temperature range is -40°C~+85°C
- It is powered by built-in battery.
- 8 Channel Standard Lora/LoraWAN Transceiver
- Fully compatible with LoRaWAN networks

**LoRa LoRaWAN RS485**

### General Specifications

- Up to 4 hydraulic valve connection features.
- 9V hydraulic latch solenoid valves can be connected.
- It offers the possibility to work with a 3.6V or 9V battery.
- It offers the possibility of working up to 5 years with a single battery.
- There will be no data loss if it is turned off and turned on.
- The device communicates with Lora modulation, LoRaWAN protocol.
- It has an EU-868 Mhz frequency band and an output power of 14 db.
- It has an external antenna and an internal antenna connection.
- Configuration operations can be performed via the system.
- It works on Ultra Low Power and does not consume unnecessary energy.
- Operating temperature range is -40°C~+85°C.
- It is Ip68 waterproof structure.

### Application Areas

- Lora/LoraWAN Sensor Applications
- Smart City Applications
- Smart Farming Applications
- Smart Greenhouse Applications
- Vertical Farming Applications
- Irrigation Systems
- SCADA Systems
- Internet of Things (IoT)
- Park Garden Smart Irrigation Solutions
- Hydroponic Agricultural Practices

157,7×58,6 mm



### Models and Details

Model Adı	Giriş Güç Değeri	GSM	Wifi	Pil	Şarjlı Pil	Kablosuz Kontrol	Vana Sayısı	Harici Anten
Smart-Valve1-9V	Yok	Yok	Yok	Var	Op	Var	1	Op
Smart-Valve2-9V	Yok	Yok	Yok	Var	Op	Var	2	Op
Smart-Valve4-9V	Yok	Yok	Yok	Var	Op	Var	4	Op

# Wireless Battery Powered Earth Humidity Sensor



- Wireless Communication
- Measurement of subsoil moisture
- EU 868 MHZ
- Communication up to 5 Km
- Operating temperature range is -40°C~+85°C
- It is powered by built-in battery.
- 8 Channel Standard Lora/LoraWAN Transceiver
- Fully compatible with LoRaWAN networks

**LoRa LoRaWAN RS485**

## General Specifications

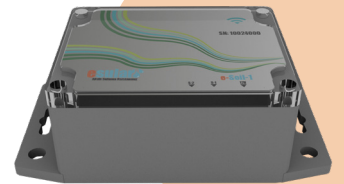
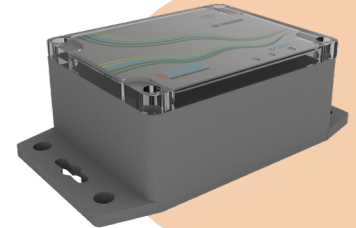
- Up to 4 soil moisture probes connection feature.
- Soil temperature measurement up to 4 pcs.
- It is powered by a 3.6V battery.
- It offers up to 5 years of operation with a 3.6V battery.
- There will be no data loss if it is turned off and turned on.
- The device communicates with Lora modulation, LoRaWAN protocol.
- It has an EU-868 Mhz frequency band and an output power of 14 db.
- It has an external antenna and an internal antenna connection.
- Configuration operations can be performed via the system.
- It works on Ultra Low Power and does not consume unnecessary energy.
- Operating temperature range is -40°C~+85°C
- It is Ip68 waterproof structure.

## Application Areas

- Lora/LoraWAN Sensor Applications
- Smart City Applications
- Smart Farming Applications
- Smart Greenhouse Applications
- Vertical Farming Applications
- Irrigation Systems
- SCADA Systems
- Internet of Things (IoT)
- Park Garden Smart Irrigation Solutions
- Hydroponic Agricultural Practices



157,7×58,6 mm



## Models and Details

Model Adı	Giriş Güç Değerleri	GSM	Wifi	Pil	Kablosuz Kontrol	Prop Sayısı	Harici Anten
Smart-Soil1	Yok	Yok	Yok	Var	Var	1	Op
Smart-Soil2	Yok	Yok	Yok	Var	Var	2	Op
Smart-Soil3	Yok	Yok	Yok	Var	Var	3	Op
Smart-Soil4	Yok	Yok	Yok	Var	Var	4	Op



# Wireless Irrigation Control Systems

Remote Irrigation Control via GSM



Soil Moisture Sensor with Wireless Battery





# Wireless Battery Humidity Temperature The Sensor



- Wireless Communication
- Measurement of subsoil moisture
- EU 868 MHZ
- Communication up to 5 Km
- Operating temperature range is -40°C~+85°C
- It is powered by built-in battery.
- 8 Channel Standard Lora/LoraWAN Transceiver
- Fully compatible with LoRaWAN networks

**LoRa LoRaWAN RS485**

## General Specifications

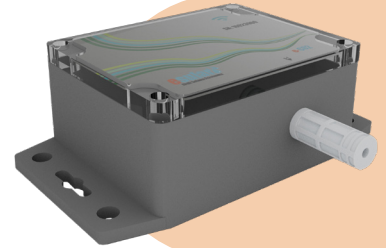
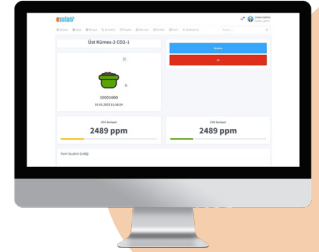
- Precise measurement of ambient temperature and humidity.
- It is powered by a 3.6V battery.
- It offers up to 5 years of operation with a 3.6V battery.
- There will be no data loss if it is turned off and turned on.
- The device communicates with Lora modulation, LoRaWAN protocol.
- It has an EU-868 Mhz frequency band and an output power of 14 db.
- It has an external antenna or internal antenna connection.
- Configuration operations can be performed via the system.
- It works on Ultra Low Power and does not consume unnecessary energy.
- Operating temperature range is -40°C~+85°C
- It is Ip68 waterproof structure.

## Application Areas

- Lora/LoraWAN Sensor Applications
- Smart City Applications
- Smart Farming Applications
- Smart Greenhouse Applications
- Vertical Farming Applications
- Irrigation Systems
- SCADA Systems
- Internet of Things (IoT)
- Park Garden Smart Irrigation Solutions
- Hydroponic Agricultural Practices

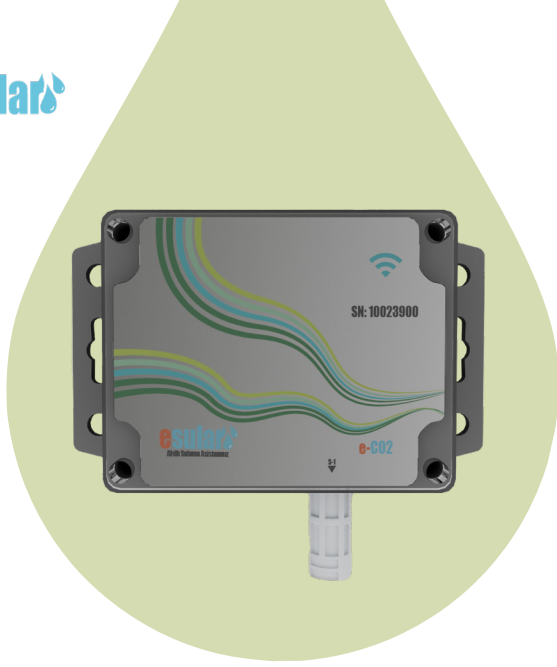


157,7×58,6 mm



## Models and Details

Model Adı	Giriş Güç Değerleri	GSM	Wifi	Pil	Kablosuz Kontrol	Prop Sayısı	Harici Anten
Smart-Temp	Yok	Yok	Yok	Var	Var	1	Op



## Carbon Dioxide with Wireless Battery The Sensor

- Wireless Communication
- Water meter pulse input
- EU 868 MHZ
- Communication up to 5 Km
- Operating temperature range is -40°C~+85°C
- It is powered by built-in battery.
- 8 Channel Standard Lora/LoraWAN Transceiver
- Fully compatible with LoRaWAN networks

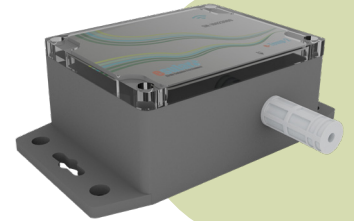
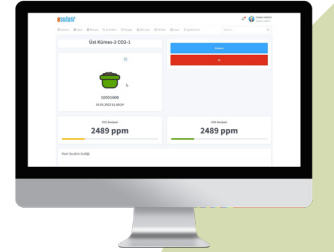
**LoRa LoRaWAN RS485**

### General Specifications

- Precise measurement of ambient temperature and humidity.
- It is powered by a 3.6V battery.
- It offers up to 5 years of operation with a 3.6V battery.
- There will be no data loss if it is turned off and turned on.
- The device works with Lora modulation and LoRaWAN protocol.
- It has an EU-868 Mhz frequency band and an output power of 14 db.
- It has an external antenna or internal antenna connection.
- Configuration operations can be performed via the system.
- It works on Ultra Low Power and does not consume unnecessary energy.
- Operating temperature range is -40°C~+85°C
- It is Ip65 waterproof structure.

### Application Areas

- Lora/LoraWAN Sensor Applications
- Smart City Applications
- Smart Farming Applications
- Smart Greenhouse Applications
- Vertical Farming Applications
- Irrigation Systems
- SCADA Systems
- Internet of Things (IoT)
- Park Garden Smart Irrigation Solutions
- Hydroponic Agricultural Practices



157,7×58,6 mm



### Models and Details

Model Adı	Giriş Güç Değerleri	GSM	Wifi	Pil	Kablosuz Kontrol	Prop Sayısı	Harici Anten
Smart- CO2	Yok	Yok	Yok	Var	Var	1	Op



## Flow Meter with Wireless Battery And The Consumption Sensor

- Wireless Communication
- Water meter pulse input
- EU 868 MHZ
- Communication up to 5 Km
- Operating temperature range is -40°C~+85°C
- It is powered by built-in battery.
- 8 Channel Standard Lora/LoraWAN Transceiver
- Fully compatible with LoRaWAN networks

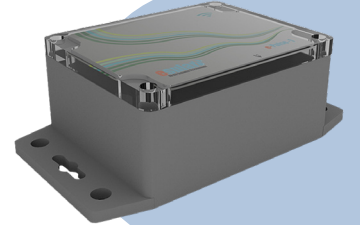
**LoRa LoRaWAN RS485**

### General Specifications

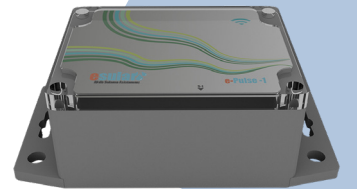
- There are up to 2 water meter pulse inputs.
- It works with mechanical or ultrasonic type pulse output meters.
- It has built-in battery and waterproof structure.
- It is powered by a 3.6V battery.
- It offers up to 5 years of operation with a 3.6V battery.
- There will be no data loss if it is turned off and turned on.
- The device works with Lora modulation and LoRaWAN protocol.
- It has an EU-868 Mhz frequency band and an output power of 14 db.
- It has an external antenna or internal antenna connection.
- Configuration operations can be performed via the system.
- It works on Ultra Low Power and does not consume unnecessary energy.
- Operating temperature range is -40°C~+85°C
- It is Ip68 waterproof structure.

### Application Areas

- Lora/LoraWAN Sensor Applications
- Smart City Applications
- Smart Farming Applications
- Smart Greenhouse Applications
- Vertical Farming Applications
- Irrigation Systems
- SCADA Systems
- Internet of Things (IoT)
- Park Garden Smart Irrigation Solutions
- Hydroponic Agricultural Practices



157,7×58,6 mm



### Models and Details

Model Adı	Giriş Güç Değerleri	GSM	Wifi	Pil	Kablosuz Kontrol	Sayaç Girişi S.	Harici Anten
Smart-Flow1	Yok	Yok	Yok	Var	Var	1	Op
Smart-Flow2	Yok	Yok	Yok	Var	Var	2	Op





## Pressure Sensor with Wireless Battery

- Wireless Communication
- 4-20mA and 0-10V pressure sensor input
- EU 868 MHZ
- Communication up to 5 Km
- Operating temperature range is -40°C~+85°C
- It is powered by built-in battery.
- 8 Channel Standard Lora/LoraWAN Transceiver
- Fully compatible with LoRaWAN networks

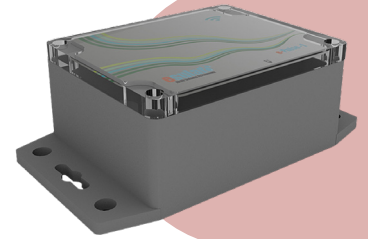
**LoRa LoRaWAN RS485**

### General Specifications

- There are 2 4-20mA or 0-10V pressure sensor inputs.
- It can provide pressure sensors with voltage Dec between 10-30V.
- It has built-in battery and waterproof structure.
- It is powered by a 3.6V battery.
- It offers up to 5 years of operation with a 3.6V battery.
- There will be no data loss if it is turned off and turned on.
- The device works with Lora modulation and LoRaWAN protocol.
- It has an EU-868 Mhz frequency band and an output power of 14 db.
- It has an external antenna or internal antenna connection.
- Configuration operations can be performed via the system.
- It works on Ultra Low Power and does not consume unnecessary energy.
- Operating temperature range is -40°C~+85°C
- It is Ip68 waterproof structure.

### Application Areas

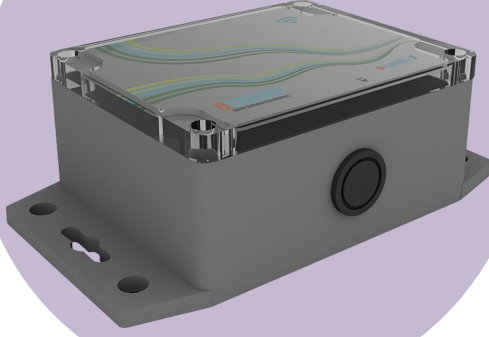
- Lora/LoraWAN Sensor Applications
- Smart City Applications
- Smart Farming Applications
- Smart Greenhouse Applications
- Vertical Farming Applications
- Irrigation Systems
- SCADA Systems
- Internet of Things (IoT)
- Park Garden Smart Irrigation Solutions
- Hydroponic Agricultural Practices



157,7×58,6 mm

### Models and Details

Model Adı	Giriş Güç Değerleri	GSM	Wifi	Pil	Kablosuz Kontrol	Basınç Girişi S.	Harici Anten
Smart-Pressure10	Yok	Yok	Yok	Var	Var	0-10bar	Op
Smart-Pressure16	Yok	Yok	Yok	Var	Var	0-16 bar	Op



## Ultrasonic with Wireless Battery Pool Level Sensor

- Wireless Communication
- Measurement in the range of 20-400 cm
- EU 868 MHz
- Communication up to 5 Km
- Operating temperature range is -40°C~+85°C
- It is powered by built-in battery.
- 8 Channel Standard Lora/LoraWAN Transceiver
- Fully compatible with LoRaWAN networks

**LoRa LoRaWAN RS485**

### General Specifications

- It has 1 ultrasonic sensor measuring 400cm.
- Performs level measurement with a battery.
- It can perform measurements between 20-400 cm.
- It has built-in battery and waterproof structure.
- It is powered by a 3.6V battery.
- It offers up to 5 years of operation with a 3.6V battery.
- There will be no data loss if it is turned off and turned on.
- The device works with Lora modulation and LoRaWAN protocol.
- It has an EU-868 Mhz frequency band and an output power of 14 db.
- It has an external antenna or internal antenna connection.
- Configuration operations can be performed via the system.
- It works on Ultra Low Power and does not consume unnecessary energy.
- Operating temperature range is -40°C~+85°C
- It is Ip68 waterproof structure.

### Application Areas

- Lora/LoraWAN Sensor Applications
- Smart City Applications
- Smart Farming Applications
- Smart Greenhouse Applications
- Vertical Farming Applications
- Irrigation Systems
- SCADA Systems
- Internet of Things (IoT)
- Park Garden Smart Irrigation Solutions
- Hydroponic Agricultural Practices



157,7×58,6 mm



### Models and Details

Model Adı	Giriş Güç Değerleri	GSM	Wifi	Pil	Kablosuz Kontrol	Prop Sayısı	Harici Anten
Smart-Level-Ultrasonic	Yok	Yok	Yok	Var	Var	1	Op





## Hydrostatic with Wireless Battery Pool Level Sensor

- Wireless Communication
- Measurement in the range of 10-150m
- EU 868 MHz
- Communication up to 5 Km
- Operating temperature range is -40°C~+85°C
- It is powered by built-in battery.
- 8 Channel Standard Lora/LoraWAN Transceiver
- Fully compatible with LoRaWAN networks

**LoRa LoRaWAN RS485**

### General Specifications

- Performs level measurement with a battery.
- It can perform measurements between 10-150 cm.
- It has built-in battery and waterproof structure.
- It is powered by a 3.6V battery.
- It offers up to 5 years of operation with a 3.6V battery.
- There will be no data loss if it is turned off and turned on.
- The device works with Lora modulation and LoRaWAN protocol.
- It has an EU-868 Mhz frequency band and an output power of 14 db.
- It has an external antenna or internal antenna connection.
- Configuration operations can be performed via the system.
- It works on Ultra Low Power and does not consume unnecessary energy.
- Operating temperature range is -40°C~+85°C
- It is Ip68 waterproof structure.
- It is suitable for deep well measurement.

### Application Areas

- Lora/LoraWAN Sensor Applications
- Smart City Applications
- Smart Farming Applications
- Smart Greenhouse Applications
- Vertical Farming Applications
- Irrigation Systems
- SCADA Systems
- Internet of Things (IoT)
- Park Garden Smart Irrigation Solutions
- Hydroponic Agricultural Practices



157,7×58,6 mm



### Models and Details

Model Adı	Giriş Güç Değerleri	GSM	Wifi	Pil	Kablosuz Kontrol	Prop Sayısı	Harici Anten
Smart-Level-Hidrostatik	Yok	Yok	Yok	Var	Var	1	Op



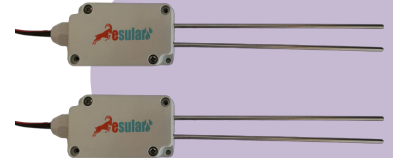
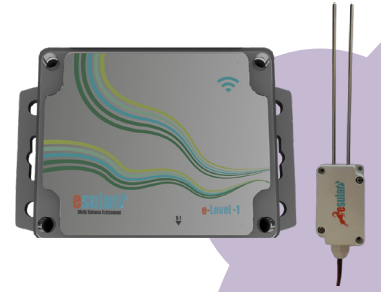
## Two-Stage with Wireless Battery Pool Level Sensor

- Wireless Communication
- It performs measurements up to 10 m.
- EU 868 MHz
- Communication up to 5 Km
- Operating temperature range is -40°C~+85°C
- It is powered by built-in battery.
- 8 Channel Standard Lora/LoraWAN Transceiver
- Fully compatible with LoRaWAN networks

**LoRa LoRaWAN RS485**

### General Specifications

- Performs level measurement with a battery.
- It performs measurements up to 10 m.
- It has built-in battery and waterproof structure.
- It is powered by a 3.6V battery.
- It offers up to 5 years of operation with a 3.6V battery.
- There will be no data loss if it is turned off and turned on.
- The device works with Lora modulation and LoRaWAN protocol.
- It has an EU-868 Mhz frequency band and an output power of 14 db.
- It has an external antenna or internal antenna connection.
- Configuration operations can be performed via the system.
- It works on Ultra Low Power and does not consume unnecessary energy.
- Operating temperature range is -40°C~+85°C
- It is Ip68 waterproof structure.



### Application Areas

- Lora/LoraWAN Sensor Applications
- Smart City Applications
- Smart Farming Applications
- Smart Greenhouse Applications
- Vertical Farming Applications
- Irrigation Systems
- SCADA Systems
- Internet of Things (IoT)
- Park Garden Smart Irrigation Solutions
- Hydroponic Agricultural Practices

157,7×58,6 mm

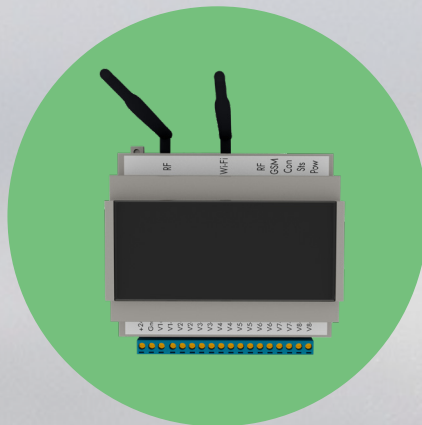
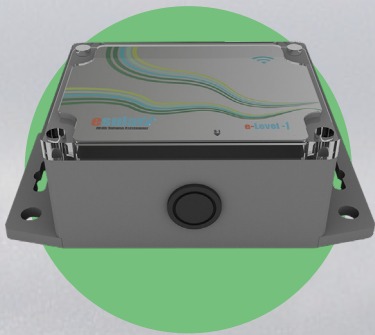
### Models and Details

Model Adı	Giriş Güç Değerleri	GSM	Wifi	Pil	Kablosuz Kontrol	Prop Sayısı	Harici Anten
Smart-Level2	Yok	Yok	Yok	Var	Var	2	Op

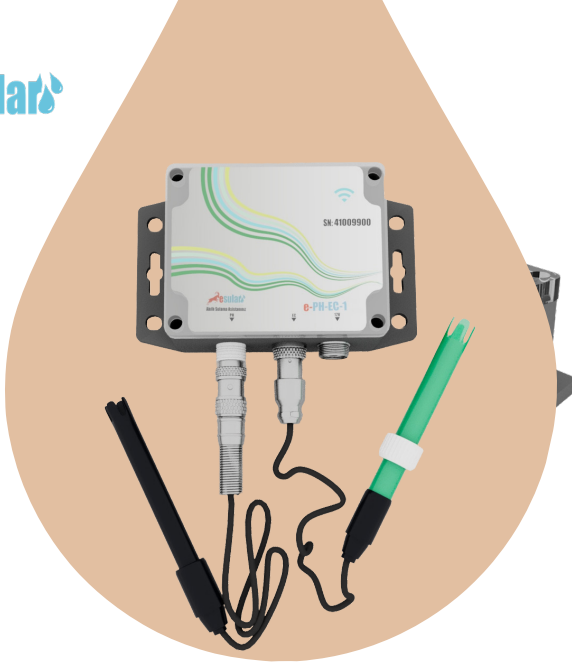


# Wireless Pool Filling Control System

Sensors and Control Units with Wireless Batteries Filling the Pool Efficiently with



Pool with Wireless Battery Level Sensor



## pH-EC with Wireless Battery-Temperature Sensor-Smart Series

- Wireless communication
- pH and EC, temperature measurement
- Wireless communication up to +5 Km
- Operating temperature 0 ~+85°C
- Powered by built-in battery.
- 8 Channel Standard Lora/LoRaWAN Transceiver
- Fully compatible with LoRaWAN networks

LoRa LoRaWAN RS485

### General Specifications

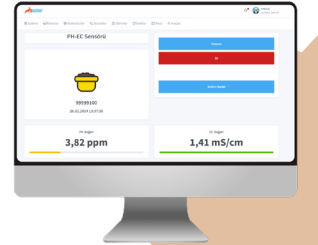
- Performs pH and EC, temperature measurement.
- 3.7V 5000 mA Rechargeable Li-ion Battery
- It has built-in battery and waterproof structure.
- Offers up to 3 years of battery life with low energy consumption and sleep mode features.
- December Measurement of pH: 0 - 14 ppm, December Measurement of EC: 0.00 - 19.99 mS/cm ; Temperature measurement December: -40~125°C
- pH accuracy: +0.1 ppm (25°C), EC accuracy: +2% mS/cm, Temperature measurement accuracy: ±0.2°C@0°C~90°C (Typical)
- There will be no data loss if it is turned off and turned on.
- Working with device Lora modulation and LoRaWAN protocol
- There are 2 external pH-EC probe connection outputs.
- Configuration operations can be performed via the system.
- There are automatic operating modes.
- Operating temperature 0~+85°C
- It is ip65 waterproof structure.

### Application Areas

- Automatic Irrigation
- Automatic Garden Watering
- Garden Irrigation
- Remote Irrigation Automation
- Smart Irrigation
- Greenhouse Automation
- Drip Irrigation Automation
- Vertical Garden Irrigation Systems
- Landless Agriculture
- Fertilization

### Models and Details

Model Adı	Giriş Güç Değerleri	GSM	Wifi	Pil	Kablosuz Kontrol	Prop Sayısı	Harici Anten
Smart - pH-EC	Yok	Yok	Yok	Var	Var	2	Op
Smart - pH	Yok	Yok	Yok	Var	Var	1	Op
Smart - EC	Yok	Yok	Yok	Var	Var	1	Op

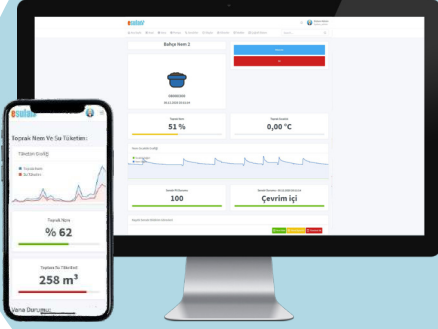


157,7×58,6 mm





# Cloud-Based Smart Irrigation Management Software



- Continuous access and control
- Intelligent irrigation management system
- Automatic and sensor operation
- Access from web and mobile media
- Multi-user and authorization
- Reporting options
- Simple and purposeful design
- Cloud-based



## General Specifications

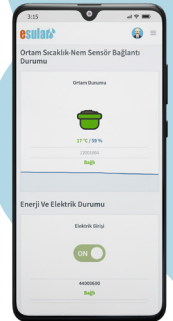
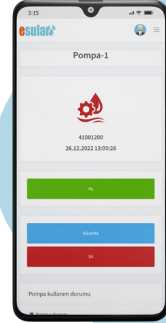
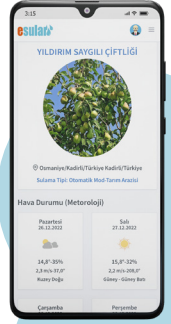
- It is cloud-based. Access can be provided via web, mobile application.
- It offers an intelligent irrigation management infrastructure.
- User-friendly design.
- Allows automatic watering scenarios.
- Automatic fertilization.
- It has a user-friendly interface with easy operation.
- It has multi-user support and authorization options.
- It provides multiple irrigation zone management.
- It allows you to create different scenarios for different terrains.
- It sends information messages by mail, SMS and makes warnings in unusual cases.
- It can be used for all configuration and control operations.
- It provides the opportunity to create a wide variety of reports with data from sensors.
- It has an integrated structure. It can talk to different services, software and APIs.
- Representation and management via map.
- Irrigation and irrigation suggestions with artificial intelligence support.

## Application Areas

- Automatic Irrigation
- Automatic Garden Watering
- Fertilization Automation
- Remote Irrigation Automation
- Smart Irrigation
- Greenhouse Automation
- Drip Irrigation Automation
- Pump Control
- Lawn Watering
- Rooting Automation
- Germination Automation
- Park Garden Irrigation

## Models and Details

Paket Adı	Arazi Sayısı	Kullanıcı Sayısı	Pompa Sayısı	Sensor Sayısı	Vana Sayısı	Otomatik sulama	Akıllı Sulama	Raporlama	Online Destek	Telefon ile Destek
Uygulama-Başlangıç	1	1	1	1	5	Var	Sınırlı	Yok	Yok	Yok
Uygulama-Giriş	1	1	4	10	10	Var	Sınırlı	Sınırlı	Var	Sınırlı
Uygulama-Profesyonel	5	2	10	50	50	Var	Var	Var	Var	Var
Uygulama-Kurumsal	50	5	100	500	500	Var	Var	Var	Var	Var
Uygulama-Büyük Ölçekli	Sorunuz									





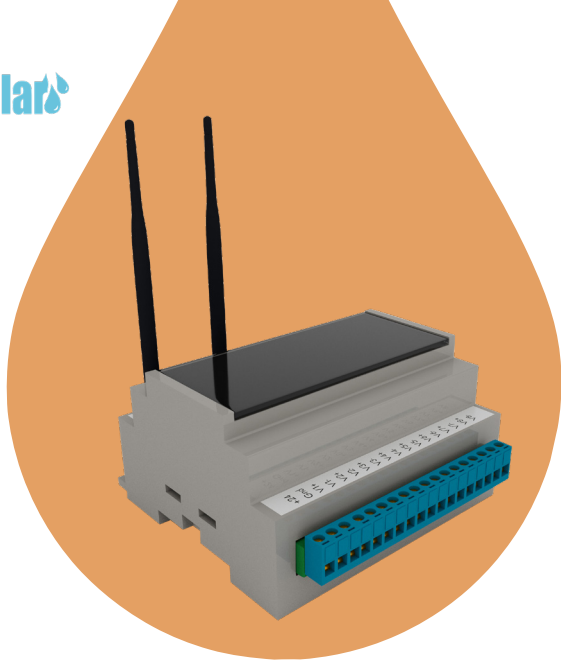
# Pumping Stations and Filtration

## Efficient Pump Management and Filtration

Esular's inverter control can accurately control the speed and power of the pump by adjusting the pump systems in a way that is more efficient, energy operating in a cost-effective and low maintenance manner it offers the advantage. Thanks to its intelligent technology, the most efficient wells it detects and automatically pumps the pumps in these wells by commissioning it, it ensures the efficient use of water.

These features include functionality such as automatic pool filling while bringing it along, it both protects the life of the pump and it saves energy. Esular's remote controlled pump systems, powerful and intelligent water management experience for users presents.





## Wireless Receiver And Pump Control Station

- Wireless Communication
- Suitable for all types of pump control
- EU 868 MHZ
- Communication up to 5 Km
- Operating temperature range is -40°C~+85°C
- 8 Channel Standard Lora/LoraWAN Transceiver
- Fully compatible with LoRaWAN networks

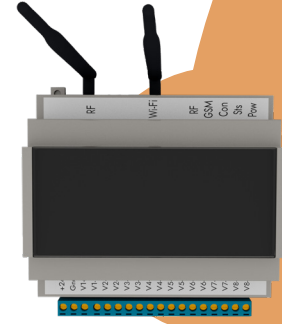
**LoRa LoRaWAN RS485**

### General Specifications

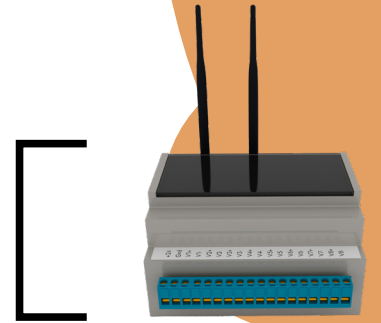
- Up to 2 pump connection features.
- 12-24V 125mA external supply.
- It performs inverter control with RS485.
- There will be no data loss if it is turned off and turned on.
- The device works with Lora modulation and LoRaWAN protocol.
- It has an EU-868 Mhz frequency band and an output power of 14 db.
- It has an external antenna or internal antenna connection.
- Configuration operations can be performed via the system.
- Operating temperature range is -40°C~+85°C
- A box with a rail-type connection feature.

### Application Areas

- Lora/LoraWAN Sensor Applications
- Smart City Applications
- Smart Farming Applications
- Vertical Farming Applications
- Irrigation Systems
- Internet of Things (IoT)
- SCADA Systems
- Park Garden Smart Irrigation Solutions

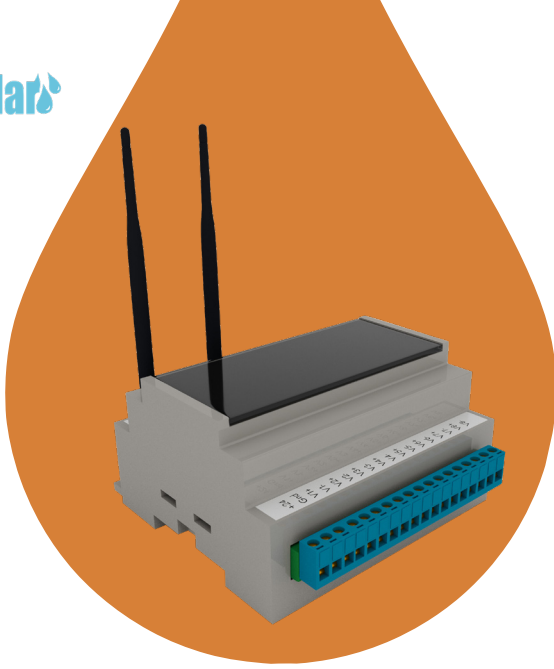


105x91 mm



### Models and Details

Model Adı	Güç Değerleri	Pilli Çalışma	Pil Ömrü	Otomatik	Frekans	Pompa	Harici Anten
Lora-P2	12-24V 250mA	Yok	-	Var	EU868 Mhz	2 adet çıkış	RF



## Wireless Battery Powered Float Status Sensor

- Wireless Communication
- All types of float connection
- EU 868 MHZ
- Communication up to 5 Km
- Operating temperature range is -40°C~+85°C
- 8 Channel Standard Lora/LoraWAN Transceiver
- Fully compatible with LoRaWAN networks

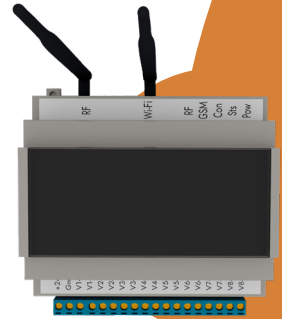
**LoRa LoRaWAN RS485**

### General Specifications

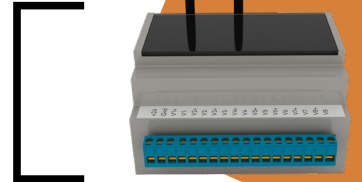
- Up to 4 float connection features.
- 3.6V battery or 12-24V 125mA external supply.
- There will be no data loss if it is turned off and turned on.
- The device works with Lora modulation and LoRaWAN protocol.
- It has an EU-868 Mhz frequency band and an output power of 14 db.
- It has an external antenna or internal antenna connection.
- Configuration operations can be performed via the system.
- Operating temperature range is -40°C~+85°C
- There is an optional Rail type connection feature.
- It is Ip68 waterproof structure.

### Application Areas

- Lora/LoraWAN Sensor Applications
- Smart City Applications
- Smart Farming Applications
- Vertical Farming Applications
- Irrigation Systems
- Internet of Things (IoT)
- SCADA Systems
- Park Garden Smart Irrigation Solutions



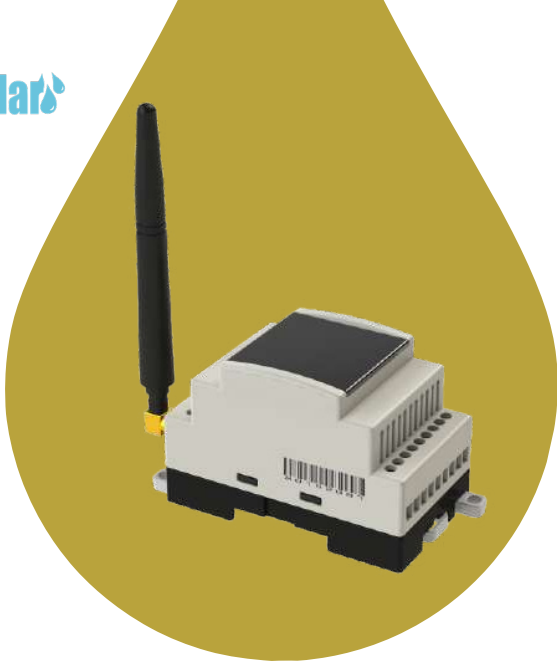
105x91 mm



### Models and Details

Model Adı	Güç Değerleri	Pillli Çalışma	Pil Ömrü	Otomatik	Frekans	Giriş	Harici Anten
Lora-S2	12-24V 250mA	Yok	-	Var	EU868 Mhz	2 adet giriş	RF
Lora-SP2	3.6V Pil	Var	10 yıl	Var	EU868 Mhz	2 adet giriş	RF





## RS485 Lora/LoRaWAN Converter

- 8 Channel Standard Lora/LoRaWAN Transceiver
- 300-115200 Baud Rs485 Communication Output
- EU 868 MHZ
- Communication up to 5 Km
- Operating temperature range is -40°C~+85°C
- GSM/ Ethernet/ USB/ Wifi
- Fully compatible with LoRaWAN networks
- Periodic sending or continuous listening

   **RS485**

### General Specifications

- Up to 32 RS485 connections are available
- Built-in MOD-BUS support
- Built-in TS EN 62056-31 Electricity meter protocol support
- It has a 12-24V 250mA external supply input.
- It takes readings 1 time a day with a battery and can transmit information to the center.
- The device has Lora modulation and LoraWAN protocol with EU-868 Mhz frequency band and 14db output power.
- The device is equipped with Lora modulation and LoRaWAN protocol with EU-868 Mhz frequency it has a band and an output power of 14db.
- It has an external antenna or internal antenna connection.
- Configuration operations can be performed via the system.
- With the LEDs located on it, the energy status, operating status and alarm status can be monitored.
- The device is equipped with LEDs to monitor the power status, operating status, and alarm status.
- Operating temperature range is -40°C~+85°C

### Application Areas

- Lora/LoRaWAN Sensor Applications
- Smart City Applications
- Smart Farming Applications
- Smart Meter Reading(Electricity, Gas, Water)
- Irrigation Systems
- Internet of Things (IoT)
- SCADA Systems
- Park Garden Smart Irrigation Solutions

### Models and Details

Model Adı	Güç Değerleri	Pilli Çalışma	Pil Ömrü	Otomatik	Frekans	Kanal	Harici Anten
Transparan RS485 Çevirici	12V-24V / 250 mA	Yok	Yok	Var	EU868 Mhz	1 Kanal Giriş Çıkış	RF
Modbus RS485 Çevirici	12V-24V / 250 mA	Var	10 Yıl	Var	EU868 Mhz	1 Kanal Giriş Çıkış	RF
TS EN 62056-31 Çevirici	12V-24V / 250 mA	Var	10 Yıl	Var	EU868 Mhz	1 Kanal Giriş Çıkış	RF





## RS232 Lora/LoRaWAN Converter

- 8 Channel Standard Lora/LoraWAN Transmitter-Receiver
- 300-115200 Baud RS485 Communication Output.
- EU 868 MHZ
- Communication up to 5 km
- Operating temperature range is -40°C~+85°C
- GSM/ Ethernet/ USB/ Wifi
- Fully compatible with LoraWAN networks.
- Periodic transmission or continuous listening.

  RS232

### General Specifications

- One RS232 connectivity feature.
- The device has built-in MOD-BUS support.
- The device has built-in support for TS EN 62056-31 Electricity Metering Protocol.
- The device has a 12-24V 250mA external power input.
- It takes readings 1 time a day with a battery and can transmit information to the center.
- There will be no data loss if it is turned off and turned on.
- The device has Lora modulation and LoraWAN protocol with EU-868 Mhz frequency band and 14db output power.
- It has both external and internal antenna connectivity.
- Configuration operations can be performed via the system.
- The device is equipped with LEDs to monitor the power status, operating status, and alarm status.
- The device operates on Ultra Low Power when it does not send data, in order to avoid unnecessary energy consumption.
- Operating temperature range is -40°C~+85°C



### Application Areas

- Lora/LoraWAN Sensor Applications
- Smart City Applications
- Smart Farming Applications
- Smart Meter Reading(Electricity, Gas, Water)
- Irrigation Systems
- Internet of Things (IoT)
- SCADA Systems
- Park Garden Smart Irrigation Solutions



### Models and Details

Model Adı	Güç Değerleri	Pilli Çalışma	Pil Ömrü	Otomatik	Frekans	Kanal	Harici Anten
Transparan RS232 Çevirici	12V-24V / 250mA	Yok	Yok	Var	EU868 Mhz	1 Kanal Giriş Çıkış	RF
Modbus RS232 Çevirici	12V-24V / 250mA	Var	10Yıl	Var	EU868 Mhz	1 Kanal Giriş Çıkış	RF
TS EN 62056-31 Çevirici	12V-24V / 250mA	Var	10Yıl	Var	EU868 Mhz	1 Kanal Giriş Çıkış	RF





## Smart Hydraulic with Wireless Battery High Pressure Irrigation Valve

- Remote control via wireless and GSM
- Integrated cast iron hydraulic valve
- EU 868 MHZ and All GSM bands
- Communication up to 5 km
- Operating temperature range is -40°C~+85°C
- It is powered by built-in battery.
- 8 Channel Standard Lora/LoraWAN Transceiver
- Fully compatible with LoRaWAN networks



## General Specifications

- It provides remote irrigation with a hydraulic valve with Lora/LoraWAN or GSM features.
- The valve and the control unit are integrated.
- It is powered by a 3.6V battery. It offers the possibility of working up to 5 years with a single battery.
- It offers completely wireless communication. It can be controlled manually and automatically.
- There is no need for any additional components to work.
- Valve status, battery status and error conditions can be monitored from the screen on it.
- It gives a warning in cases such as opening the lid, not opening the valve, running out of battery.
- There will be no data loss if it is turned off and turned on.
- The device works with Lora modulation and LoRaWAN protocol.
- It has an EU-868 Mhz frequency band and an output power of 14 db.
- It has an external antenna or internal antenna connection.
- Configuration operations can be performed via the system.
- It works on Ultra Low Power and does not consume unnecessary energy.
- Operating temperature range is -40°C~+85°C
- It is waterproof with an IP68 rating.

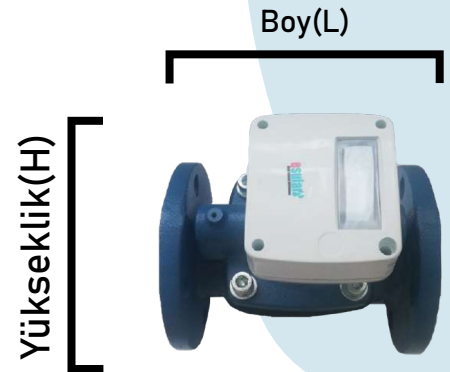


## Application Areas

- Lora/LoraWAN Sensor Applications
- Smart City Applications
- Smart Farming Applications
- Vertical Farming Applications
- Irrigation Systems, Drip Irrigation Automation
- SCADA Systems
- Internet of Things (IoT)
- Park Garden Smart Irrigation Solutions

## Models and Details

Model Adı	Boy(mm)	Yükseklik(mm)	Güç Değerleri	Pil	Pil Ömrü	Otomatik	GSM	Lora	Harici Anten
Smart-DN50-L	270	255	3.6V	Var	+5 yıl	Var	Yok	Var	RF
Smart-DN65-L	265	260	3.6V	Var	+5 yıl	Var	Yok	Var	RF
Smart-DN80-L	280	260	3.6V	Var	+5 yıl	Var	Yok	Var	RF
Smart-DN100-L	300	290	3.6V	Var	+5 yıl	Var	Yok	Var	RF
Smart-DN50-G	270	255	3.6V	Var	+5 yıl	Var	Var	Yok	GSM
Smart-DN65-G	265	260	3.6V	Var	+5 yıl	Var	Var	Yok	GSM
Smart-DN80-G	280	260	3.6V	Var	+5 yıl	Var	Var	Yok	GSM
Smart-DN100-G	300	290	3.6V	Var	+5 yıl	Var	Var	Yok	GSM





## The Large Body Threaded Hydraulic Solenoid Valve

- PN 10
- Threaded assembly
- Pressure resistance up to 10 bars.
- Latch solenoid and 24V solenoid options.
- Special design resistant to sunlight.
- Wide operating and pressure range.
- Sizes: 3", 4"
- Fully compatible with LoraWan networks.
- Less loss at low pressure.

### General Specifications

- The Solenoid Control Valve is a hydraulic control valve that performs the opening-closing operation by remotely controlling the valve with an electrical signal using a solenoid coil mounted on it.
- Its body and diaphragm design provide a smooth flow with minimum pressure drop. The control of the main valve is performed by solenoid coils mounted on it.
- Optional 24V AC 50Hz / 60Hz or 12V DC, 9V DC LATCH and 12V DC LATCH normally open (N.O.) or normally closed (N.C.) solenoid coils can be used on the main valve.
- Pressure Range: PN 10
- Sizes: 3", 4"
- Threaded connection.
- (24V AC) model options.
- (9-12V DC Latch) model options.
- Pressure reducing control valve reduces the inlet pressure to the desired pressure value.
- Easy to use and maintain with its simple structure.
- Wide pressure range operation.
- Excellent modulation even at low flow rates.
- Flexible diaphragm that can open and close without any impact
- It is completely leak-proof with a reinforced diaphragm and an internal spring.



### Application Areas

- Agricultural Irrigation
- Landscape Irrigation for Parks and Gardens
- Hobby Garden Irrigation
- Industrial Pool Filling
- Smart Irrigation
- Remote Controlled Irrigation

### Models and Details



Büyük Gövde Dişli Vanalar PN 10	Giriş Güç Değeri	Ölçü	Ölçü
Solenoid Kontrol Vanası	(24V AC ) EL/G	3"	4"
Solenoid Kontrol Vanası	(9-12V DC Latch)	3"	4"
Solenoid Kontrol Vanası + Basınç Düşürücü	(24V AC ) EL/G (9-12V DC Latch)	3"	4"





## Gear Hydraulic Solenoid Valve

- PN 10
- Threaded assembly
- Pressure resistance up to 10 bars.
- 9-12V Latch solenoid and 24V solenoid options
- Special design resistant to sunlight.
- Wide pressure range operation.
- Sizes: 3/4" 1" 1 1/2" 2" 2 1/2"
- Less loss at low pressure.
- It is fully compatible with automation systems.

## General Specifications

- The body and diaphragm design ensure smooth flow with minimum pressure loss. The control of the main valve is performed by solenoid coils mounted on it.
- Pressure Range: PN 10
- Sizes: 3/4" 1" 1 1/2" 2" 2 1/2"
- Gear
- (24V AC) model options.
- (9-12V DC Latch) model options.
- Pressure reducing control valve reduces the inlet pressure to the desired pressure value.
- Easy to use and maintain due to its simple structure.
- Wide operating pressure range.
- Excellent modulation even at low flow rates.
- Flexible diaphragm that can open and close without any impact.
- Completely leak-proof with a reinforced diaphragm and internal spring
- Wide control applications with different pilot valves.

## Application Areas

- Agricultural Irrigation
- Park and Garden Landscape Irrigation
- Hobby Garden Irrigation
- Industrial Pool Filling
- Smart Irrigation
- Remote Controlled Irrigation



## Models and Details

Dışlı Vanalar PN 10	Giriş Güç Değeri	Ölçü	Ölçü	Ölçü	Ölçü	Ölçü
Solenoid Kontrol Vanası	(24V AC ) EL/G	3/4"	1"	1 1/2"	2"	2 1/2"
Solenoid Kontrol Vanası	(9-12V DC Latch)	3/4"	1"	1 1/2"	2"	2 1/2"
Solenoid Kontrol Vanası+ Basınç Düşürücü	(24V AC ) EL/G (9-12V DC Latch)	3/4"	1"	1 1/2"	2"	2 1/2"



# Flanged Hydraulic Solenoid Valve

- PN 10
- Threaded assembly
- Pressure resistance up to 10 bars.
- 9-12V Latch solenoid and 24V solenoid options
- Special design resistant to sunlight.
- Wide pressure range operation.
- Sizes: 3/4" 1" 1 1/2" 2" 2 1/2"
- Less loss at low pressure.
- It is fully compatible with automation systems.

## General Specifications

- The body and diaphragm design provide smooth flow with minimal pressure loss. The main valve is controlled by solenoid coils mounted on it.
- Pressure Range: PN 10
- Sizes: 3/4" 1" 1 1/2" 2" 2 1/2" 3" 4"
- Flanged
- (24V AC ) model options.
- (9-12V DC Latch) model options.
- Pressure reducing control valve reduces the input pressure to the desired pressure value.
- Easy to use and maintain with its simple structure
- Wide operating pressure range.
- Excellent modulation even at low flow rates.
- Flexible diaphragm that can open and close without impact.
- The valve is completely leak-proof with a reinforced diaphragm and internal spring.
- Wide control applications with different pilot valves.
- The flanged option provides an easier connection.



## Application Areas

- Agricultural Irrigation
- Park and Garden Landscape Irrigation
- Hobby Garden Irrigation
- Industrial Pool Filling
- Smart Irrigation
- Remote Controlled Irrigation



## Models and Details

Flanşlı Vanalar PN 10	Giriş Güç Değeri	Ölçü	Ölçü	Ölçü	Ölçü	Ölçü
Solenoid Kontrol Vanası	(24V AC ) EL/G	3"	4"			
Solenoid Kontrol Vanası	(9-12V DC Latch)	3"	4"			
Solenoid Kontrol Vanası + Basınç Düşürücü	(24V AC ) EL/G (9-12V DC Latch)	3"	4"			
Solenoid Kontrol Vanası + Basınç Düşürücü	(24V AC ) EL/G (9-12V DC Latch)	3/4"	1"	1 1/2"	2"	2 1/2"





## Angle (90) Flanged Hydraulic Solenoid Valve

- PN 10
- Flanged mounting
- Pressure resistance up to 10 bars.
- 9-12V Latch solenoid and 24V solenoid options
- Special design resistant to sunlight.
- Wide operating and pressure range.
- Sizes: 3/4" 1" 1 1/2" 2" 2 1/2"
- Less loss at low pressure.
- It is fully compatible with automation systems.

## General Specifications

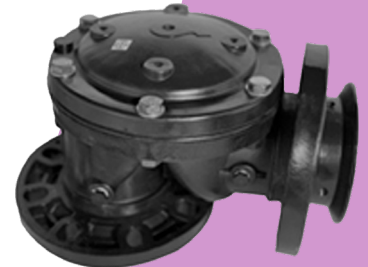
- The body and diaphragm design ensure smooth flow with minimum pressure loss. The control of the main valve is performed by the solenoid coils mounted on it.
- Pressure Range: PN 10
- Sizes: 3/4" 1" 1 1/2" 2" 2 1/2" 3" 4"
- Flanged
- (24V AC ) model options.
- (9-12V DC Latch) model options.
- Pressure reducing control valve reduces the input pressure to the desired pressure value.
- Easy to use and maintain due to its simple structure.
- Wide operating pressure range.
- Excellent modulation even at low flow rates.
- Flexible diaphragm that can open and close without impact.
- The valve is completely leak-proof with a reinforced diaphragm and internal spring.
- Wide control applications with different pilot valves.
- The flanged option provides an easier connection.

## Application Areas

- Agricultural Irrigation
- Park and Garden Landscape Irrigation
- Hobby Garden Irrigation
- Industrial Pool Filling
- Smart Irrigation
- Remote Controlled Irrigation

## Models and Details

Açılı (90) Flanşlı Vanalar PN 10	Giriş Güç Değeri	Ölçü	Ölçü
Solenoid Kontrol Vanası	(24V AC ) EL/G	3"	4"
Solenoid Kontrol Vanası	(9-12V DC Latch)	3"	4"
Solenoid Kontrol Vanası + Basınç Düşürücü	(24V AC ) EL/G (9-12V DC Latch)	3"	4"





## Angle (90) Threaded Hydraulic Solenoid Valve

- PN 10
- Flanged mounting
- Pressure resistance up to 10 bars.
- 9-12V Latch solenoid and 24V solenoid options
- Special design resistant to sunlight.
- Wide operating and pressure range.
- Sizes: 3", 4"
- Less loss at low pressure.
- It is fully compatible with automation systems.

### General Specifications

- The angled body and diaphragm design ensure smooth flow with minimum pressure loss. Control of the main valve is performed by the solenoid coils mounted on it.
- Pressure Range: PN 10
- Sizes: 3", 4"
- Flanged
- (24V AC ) model options.
- (9-12V DC Latch) model options.
- It can operate in both horizontal and vertical positions in application areas.
- Pressure reducing control valve reduces the input pressure to the desired pressure value.
- Easy to use and maintain due to its simple structure.
- Wide operating pressure range.
- Excellent modulation even at low flow rates.
- Flexible diaphragm that can open and close without any impact.
- The valve is completely leak-proof with a reinforced diaphragm and internal spring.
- Wide control applications with different pilot valves.
- It can operate in both horizontal and vertical positions in application areas.

### Application Areas

- Agricultural Irrigation
- Park and Garden Landscape Irrigation
- Hobby Garden Irrigation
- Industrial Pool Filling
- Smart Irrigation
- Remote Controlled Irrigation



### Models and Details

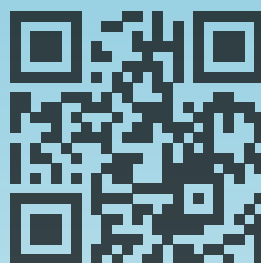
Açılı (90) Dişli Vanalar PN 10	Giriş Güç Değeri	Ölçü	Ölçü
Solenoid Kontrol Vanası	(24V AC ) EL/G	2"	2 1/2"
Solenoid Kontrol Vanası	(9-12V DC Latch)	2"	2 1/2"
Solenoid Kontrol Vanası + Basınç Düşürücü	(24V AC ) EL/G (9-12V DC Latch)	2"	2 1/2"



**esular.com**

**0850 399 6888**

**info@esular.com**



**2024**